

PYRAMID HILL STREETSCAPE MASTERPLAN

Pyramid Hill has a compact form with many community facilities within easy walking distance of the town centre. Streetscape proposals are aimed at supporting the pedestrian experience of Pyramid Hill by framing the town's many strengths through subtle landscape interventions.

Project aspirations

Reliable pedestrian networks for all ages and abilities.

Visual sense of the 'town centre' through recognisable tree planting hierarchy and other landscape measures.

Holistic approach to landscaping renewal in the town centre.

Connections between key public open spaces favouring pedestrian and bicycle users.

Range of quality public places in and around existing buildings.

Protection and strengthening of sight lines to key built and natural features.



MASTERPLAN DESIGN RESPONSE

MASTERPLAN STATEMENT

With a number of quality projects flagged for implementation in Pyramid Hill, the design approach aims to unify these within the wider town context. Town approaches, sightlines and pedestrian navigation are all considered in shaping the proposed Masterplan.

Key Concepts

- Street tree planting at key town center approaches
- Improved pedestrian amenity and navigation around center and between key community facilities
- Present unified and exciting 'civic green' proposal for Kelly's Park precinct

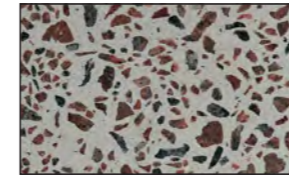
MATERIAL PALETTE

The palette for Pyramid Hill draws on the presence of the nearby granite outcrops coupled with robust, surface and furniture materials including corten steel and dark oiled timber.

Materials have been selected to be locally sourced where practical

SURFACES

EXPOSED AGGREGATE CONCRETE
With dark/red stone aggregate



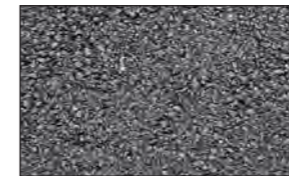
Standard

UNIT PAVERS
Granite pavers
Lay in square where replicating footpath inlay

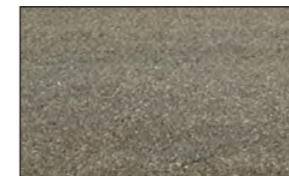


Stone

ASPHALT



BITUMEN SPRAY SEAL
Over existing compacted surface



COMPACTED GRAVEL



LOOSE GRAVEL



MATERIAL DETAILS



INLAY
Used where contrasting materials meet



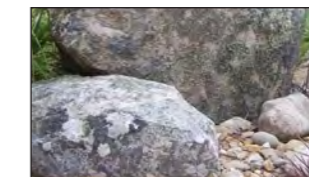
RAISED EDGING
Used where garden beds meet pavements



OILED TIMBER



CORTEN STEEL



GRANITE BOULDERS

CONCEPT OVERLAY



LEGEND

- | | | | | |
|----------------------------|----------------------------|-----------------------------|----------------------|---------------------|
| Stone pavers | Asphalt road surface | Picnic setting | Street tree planting | Grassed area |
| Exposed aggregate concrete | Bitumen spray seal surface | Bench seat & raised planter | Existing tree | Garden bed in mulch |
| Asphalt footpath | | Bike Hoop & bollards | Street tree planting | Compacted gravel |
| | | | Park tree planting | |

CONCEPTS

- Graphic overlays as previously presented at concept level
- Pedestrian network
 - Crossing point
 - Cycling network
 - Key traffic slowing points



MASTERPLAN OVERVIEW



LEGEND

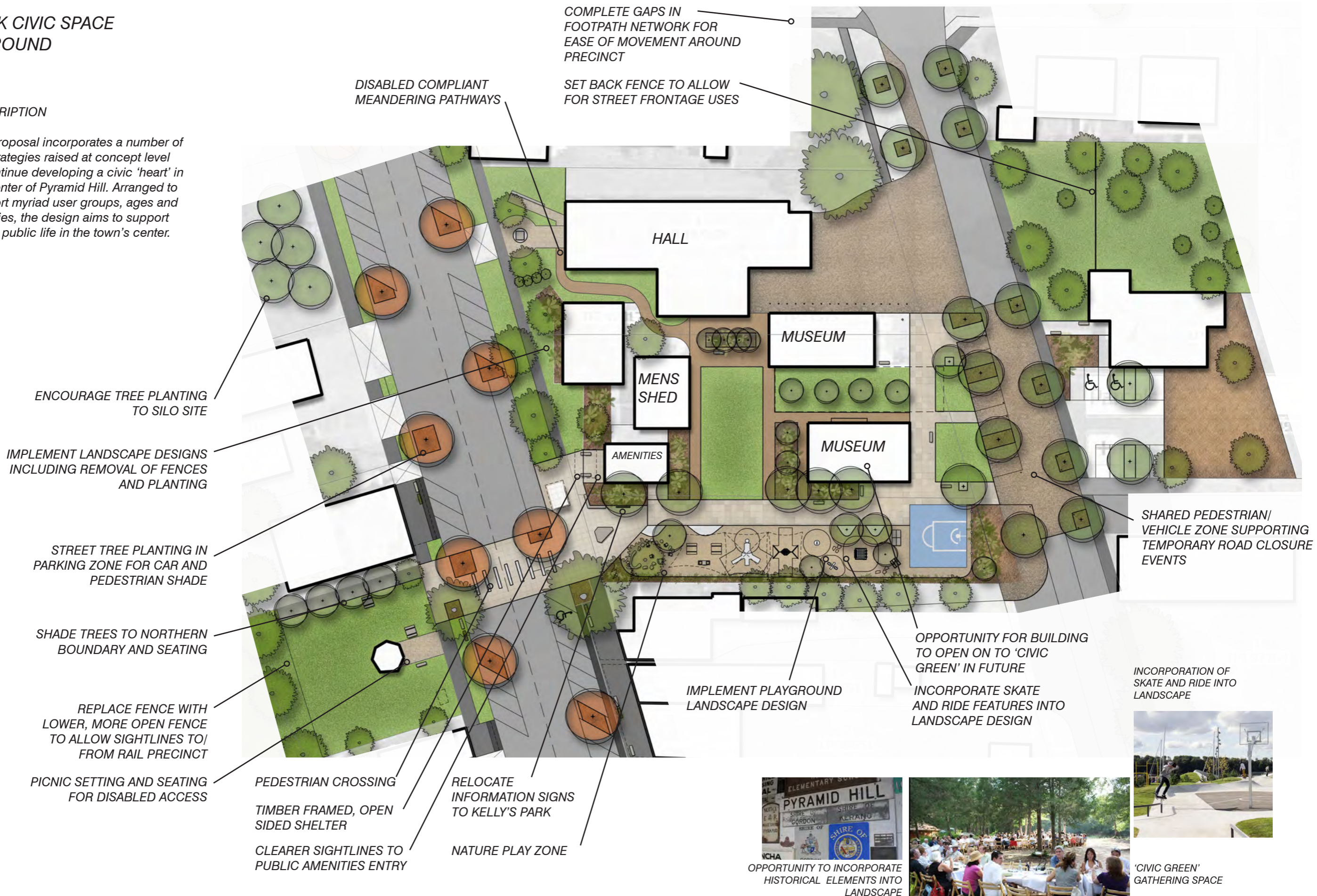
	Stone pavers		Asphalt road surface		Picnic setting		Street tree planting		Grassed area
	Exposed aggregate concrete		Bitumen spray seal surface		Bench seat & raised planter		Existing tree		Garden bed in mulch
	Asphalt footpath		Bike Hoop & bollards		Street tree planting		Park tree planting		Compacted gravel



KELLY'S PARK CIVIC SPACE AND PLAYGROUND

DESCRIPTION

The proposal incorporates a number of the strategies raised at concept level to continue developing a civic 'heart' in the center of Pyramid Hill. Arranged to support myriad user groups, ages and activities, the design aims to support active public life in the town's center.



ENCOURAGE TREE PLANTING TO SILO SITE

IMPLEMENT LANDSCAPE DESIGNS INCLUDING REMOVAL OF FENCES AND PLANTING

STREET TREE PLANTING IN PARKING ZONE FOR CAR AND PEDESTRIAN SHADE

SHADE TREES TO NORTHERN BOUNDARY AND SEATING

REPLACE FENCE WITH LOWER, MORE OPEN FENCE TO ALLOW SIGHTLINES TO/ FROM RAIL PRECINCT

PICNIC SETTING AND SEATING FOR DISABLED ACCESS

PEDESTRIAN CROSSING
TIMBER FRAMED, OPEN SIDED SHELTER
CLEARER SIGHTLINES TO PUBLIC AMENITIES ENTRY

RELOCATE INFORMATION SIGNS TO KELLY'S PARK
NATURE PLAY ZONE

COMPLETE GAPS IN FOOTPATH NETWORK FOR EASE OF MOVEMENT AROUND PRECINCT
SET BACK FENCE TO ALLOW FOR STREET FRONTAGE USES

DISABLED COMPLIANT MEANDERING PATHWAYS

IMPLEMENT PLAYGROUND LANDSCAPE DESIGN

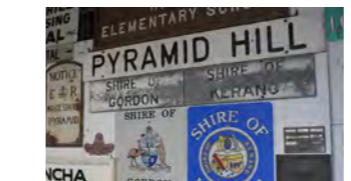
OPPORTUNITY FOR BUILDING TO OPEN ON TO 'CIVIC GREEN' IN FUTURE
INCORPORATE SKATE AND RIDE FEATURES INTO LANDSCAPE DESIGN

SHARED PEDESTRIAN/VEHICLE ZONE SUPPORTING TEMPORARY ROAD CLOSURE EVENTS

INCORPORATION OF SKATE AND RIDE INTO LANDSCAPE



'CIVIC GREEN' GATHERING SPACE



OPPORTUNITY TO INCORPORATE HISTORICAL ELEMENTS INTO LANDSCAPE



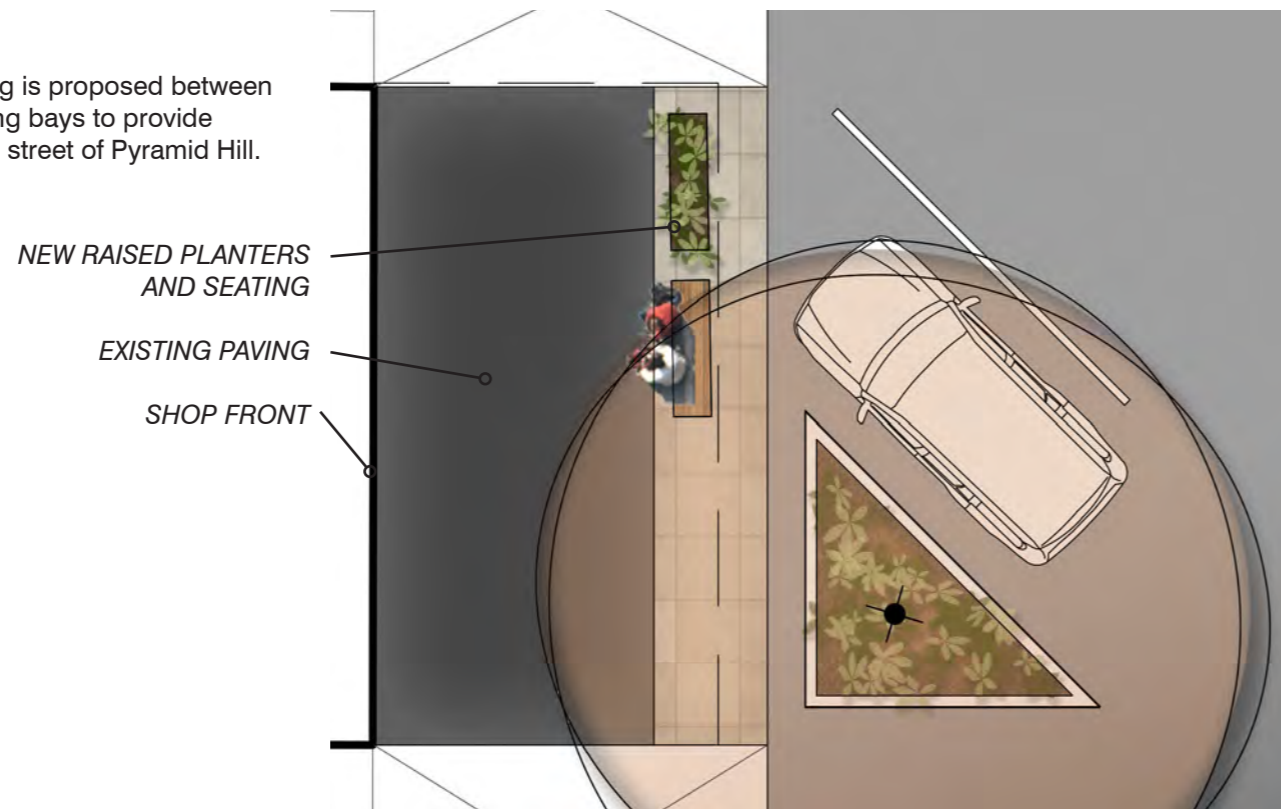
KELLY'S PARK CIVIC SPACE
AND PLAYGROUND



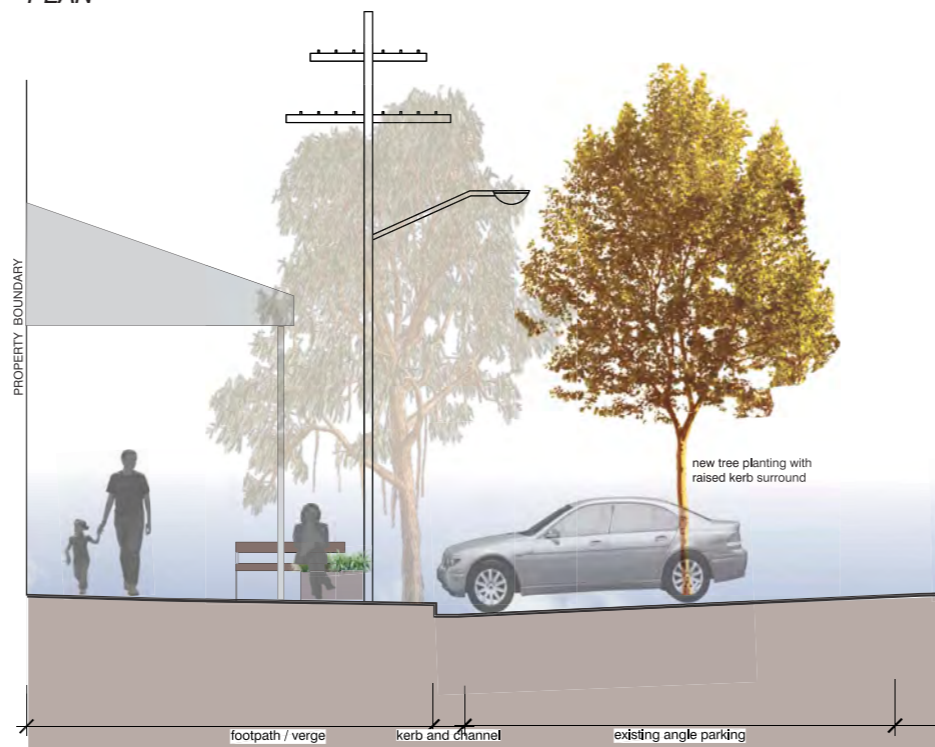
**STREET TREE PLANTING
KELLY STREET**

DESCRIPTION

Street tree planting is proposed between existing car parking bays to provide shade in the main street of Pyramid Hill.



PLAN

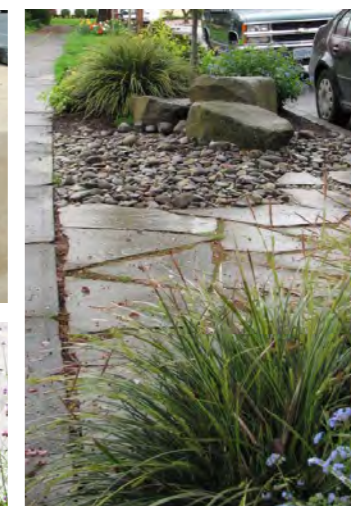
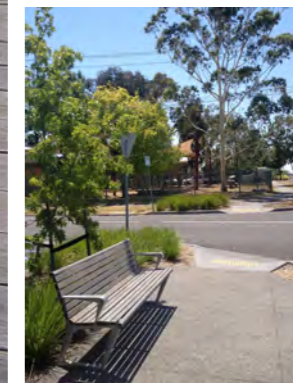


CROSS SECTION

**TEXT INLAY
TO SEATING**



**GENEROUSLY SIZED
RAISED PLANTERS**



**EXAMPLE SHOWING SCALE
AND PLACEMENT OF
SEATING TO PLANTERS**



**STREET TREE PLANTING
TOWN ENTRY BOULEVARDS**

PYRAMID HILL COLLEGE

CONTINUE VERGE TREE PLANTING
NORTH TO PYRAMID HILL COLLEGE

PROPOSED SALTBUSH
WALKING TRAIL




SPORTS OVAL

CONTINUE VERGE TREE PLANTING
EAST TO IRRIGATION CANAL

CONTINUE VERGE TREE PLANTING
WEST TO END OF SPORTS OVAL

BOWLS CLUB

LEGEND

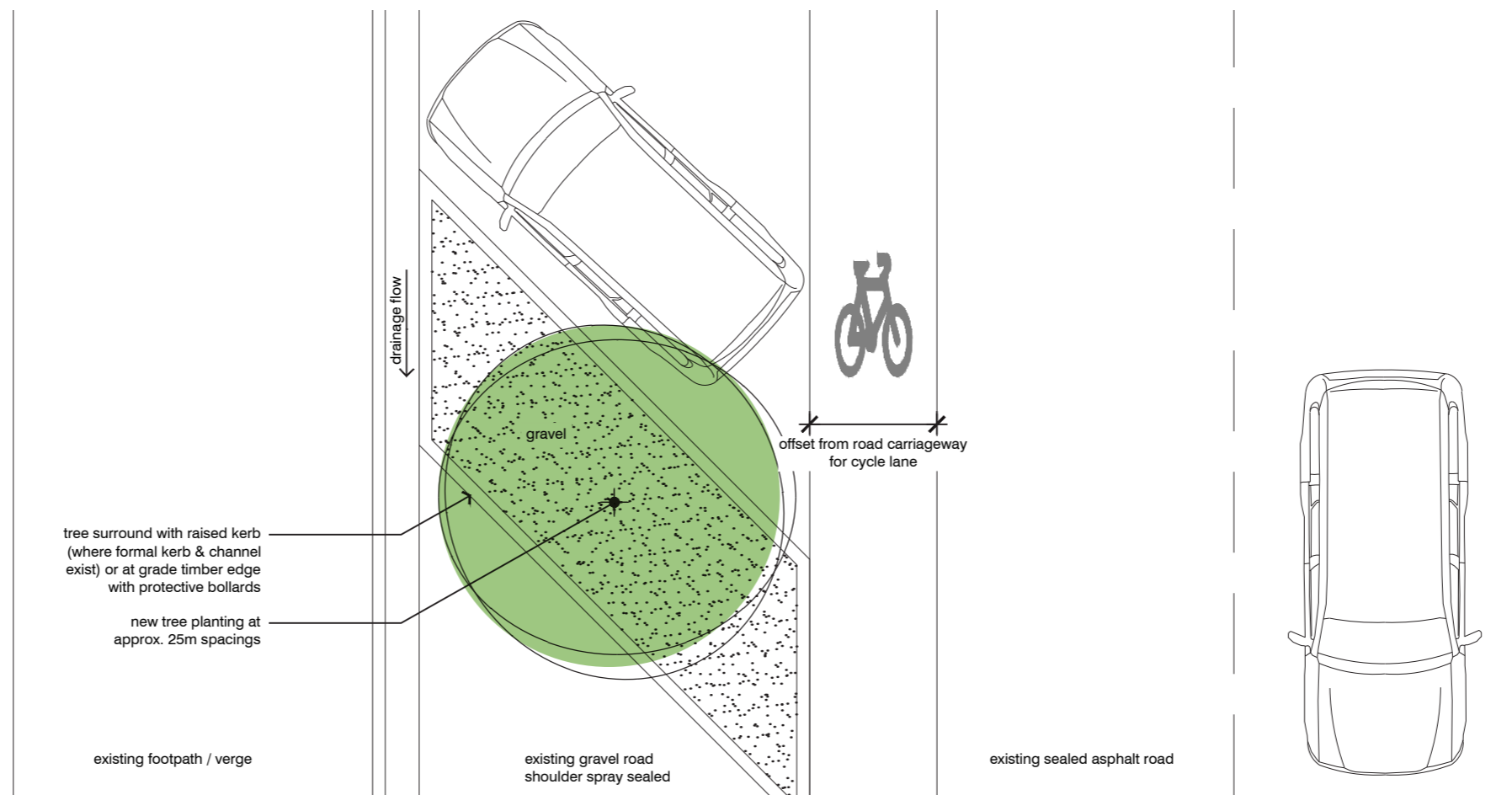
-  EXTENT OF VERGE TREE PLANTING
-  TOWN CENTRE EXTENT OF WORKS
-  WALKING PATH ALONG SEVEN MONTHS CREEK

CONTINUE VERGE TREE PLANTING
SOUTH TO IRRIGATION CANAL

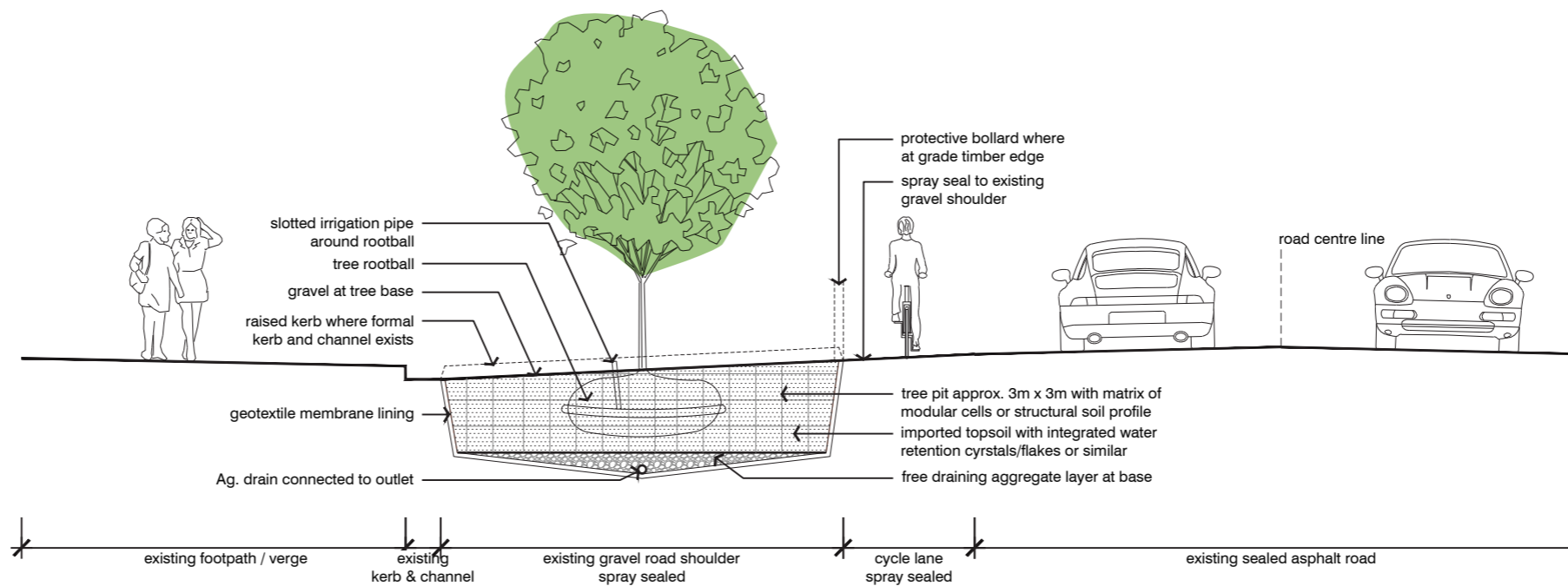


**STREET TREE PLANTING
TOWN ENTRY BOULEVARDS**

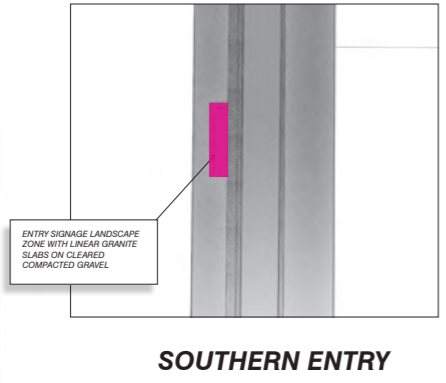
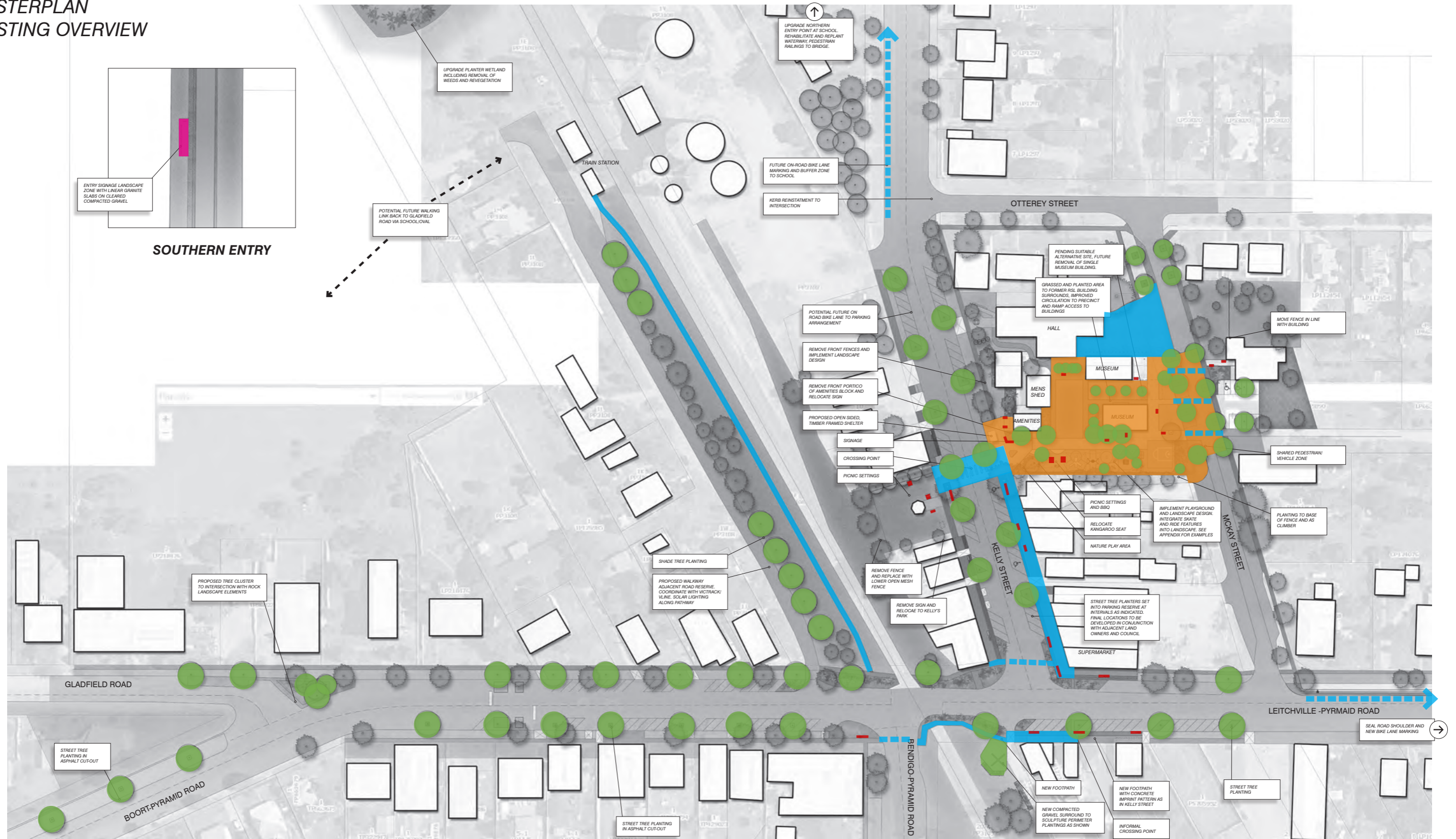
PLAN



CROSS SECTION



MASTERPLAN
COSTING OVERVIEW



LEGEND

- access, pedestrian and cycle networks
- tree planting
- town entries and sense of arrival
- furniture and planters
- town centre 'civic heart'



OPTIONAL STREETScape PROPOSALS

Amongst the feedback received throughout the project, the following ideas were worth noting for future consideration beyond the present project scope and budget;

- *Investigate initiatives that could improve shop fronts, Implement more bins*
- *Consolidate bus drop off/pick up areas*
- *Broader footpath upgrades to residential areas*

EXPANDED PROJECT CONSIDERATIONS

Beyond the Masterplans prepared in this document, the following should be considered in any further development of the projects;

Loddon Shire Council policies should be referenced, including but not limited to:

- *Community Access and Inclusion Plan*
- *Aging in place*
- *Tracks and Trails strategy*
- *Kerbside trading*
- *Open space network*
- *Economic Development Strategy*

AS1428.1 (2000) should be used as a minimum performance standard for checklist of all public facilities and spaces.

Full site levels and feature surveys should be undertaken to areas covered in the master plans to inform accurate and compliant Civil design.

Civil (and where appropriate traffic) engineering should be undertaken on all proposals to ensure accurate and compliant designs.

Further consultation with stakeholder immediately affected by proposals should be undertaken to ensure sound communication of project design intent and possible construction impacts.

As the recognised indigenous custodians of the region, the Dja Dja Wurrung have expressed an interest in the Loddon Streetscape Masterplans and should be assumed as a stakeholder in further development of the proposals

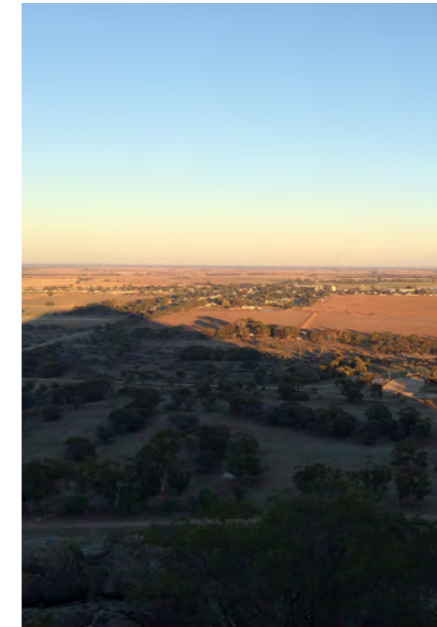
All proposal sited should be surveyed for existing underground services prior to any works

NOTE: The drawings contained in these master plans are not for construction

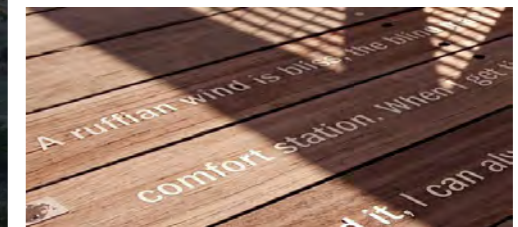
“TELL ME, ABOUT TOWN”

Within the developing framework of the “About Town” streetscapes project there is the opportunity for the telling of local stories in the design proposals. This is a way of embedding local experience and colour into the designs to reflect the unique character of each town while acknowledging a wider, regional shared experience.

Such stories could be realised in a number of ways and will be developed in the coming stages of the project. We recognise that these stories are out there, we just need to tap into them.



**“so tell me,
about the hill”**



If you know of a good source of local, anecdotal storytelling, let us know as part of your ‘About Town’ submission.



Example project showing integration of text in landscape elements.

‘Wellington Writer’s Walk’ Wellington NZ.